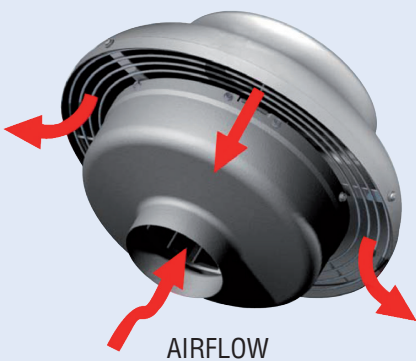
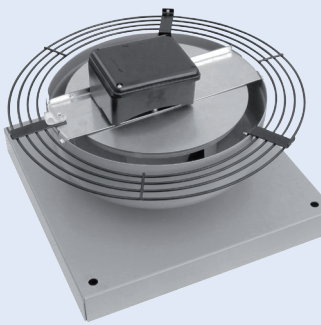
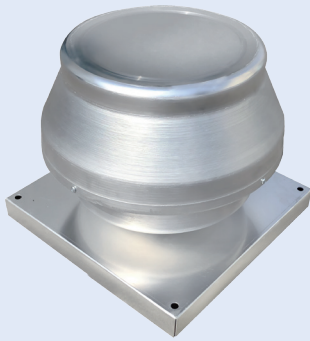


> DRF

Centrifugal roof fan



GENERAL DESCRIPTION

DRF is a versatile and robust range of centrifugal roof extract units available in 6 sizes and suitable for vertical and horizontal installation. The protection cowl in highly resistant aluminium is perfectly adapted for exposed areas. DRF compact design and easy installation is made to satisfy the requirements of efficient ventilation in residential, commercial and light industrial applications.

INSTALLATION

- Compact centrifugal roof fan for free or ducted application.
- Horizontal and vertical installation.
- Can be mounted on an exterior wall when roof access is not available.
- Easy solution for a multipoint ventilation need.
- Added benefits of the outdoor installation: free interior space, maximised ventilation and noiseless operation.

MOTOR SPECIFICATION

- Ball bearing motor, permanently lubricated for maintenance-free operation and continuous running.
- Fan and motor assembly balanced for a quiet and vibration-free operation.
- Motor is IP44 protected.

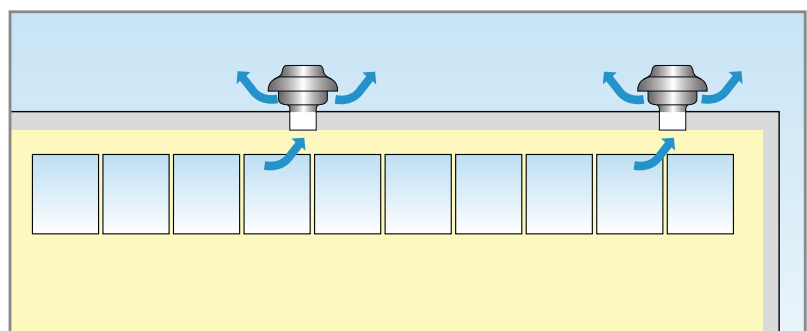
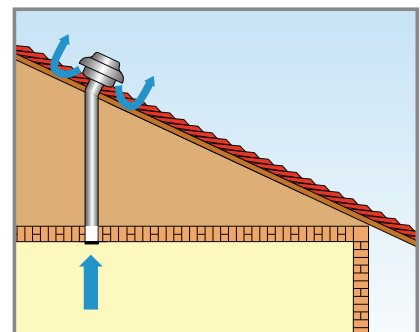
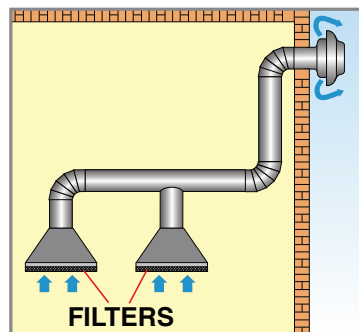
PRODUCT SPECIFICATION

- Available in 6 sizes with performances rating from 240 m³/h to 1430 m³/h (20 to 680 Pa).
- Suitable for clean air temperature from -30°C up to +60°C.
- Cowl in highly resistant aluminium.
- The cowl is removable for access to the motor and wiring connections.
- Cowl's screws in HDG resistant to atmospheric agents.
- Self-cleaning backward bladed impeller with high efficiency and low noise level.
- Protection guard is electroplated.
- Speed controllable for highly efficient and economical airflow.
- CE marked.
- Comply with EN 60335-2-80, B.T. 2006/95/CE, EMC 2004/108/CE.

OPTION (UPON REQUEST)

- Speed regulators.

APPLICATIONS

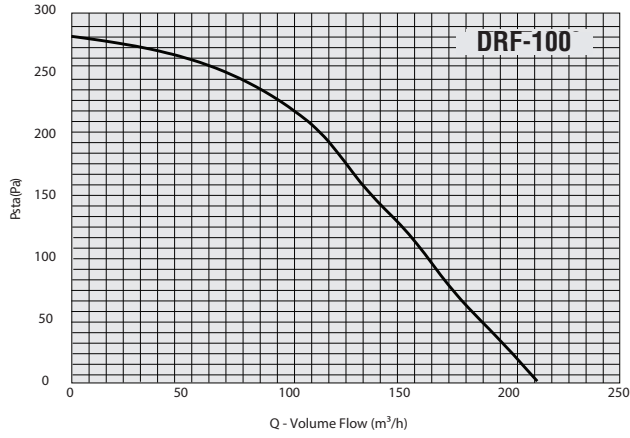


SEZ.
1

L_p: sound pressure level measured at 3m in accordance with AMCA standard 300

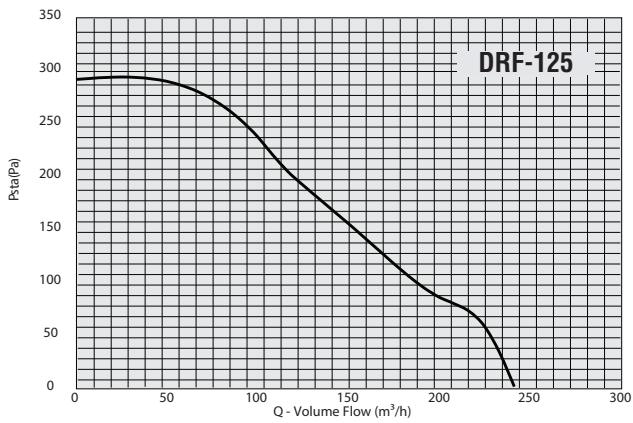
Tested in accordance with AMCA standard 210 at air temperature 15°C - Barometric pressure 760 mm Hg - Air specific weight 1.22 Kg/m³

sez. 1



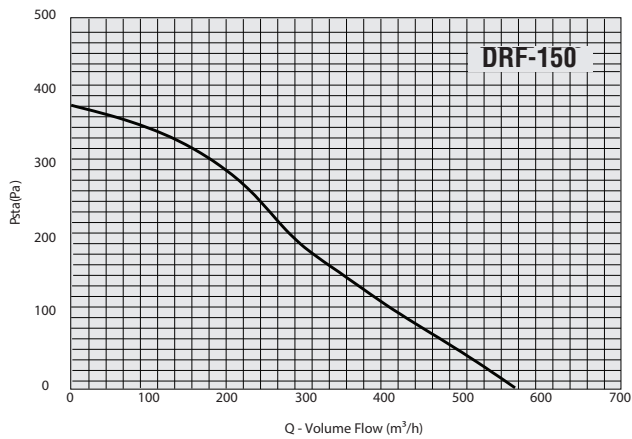
| Air Flow | | Pressure | IP/CL | Sound | Operating Temp |
|-------------------|-----|----------|-------|----------|----------------|
| m ³ /h | Pa | | | dB(A) | Min/Max (°C) |
| 210 | 280 | 44/F | 46 | -30 / 60 | |

| Rated Power | Max. Current | Nominal Speed | Capacitor | Power Supply |
|-------------|--------------|---------------|-----------|----------------------|
| W | A | RPM | uF | |
| 69 | 0.32 | 2222 | 3 | 220-240 V/1 Ph /50hz |



| Air Flow | | Pressure | IP/CL | Sound | Operating Temp |
|-------------------|-----|----------|-------|----------|----------------|
| m ³ /h | Pa | | | dB(A) | Min/Max (°C) |
| 240 | 290 | 44/F | 48 | -30 / 60 | |

| Rated Power | Max. Current | Nominal Speed | Capacitor | Power Supply |
|-------------|--------------|---------------|-----------|----------------------|
| W | A | RPM | uF | |
| 73 | 0.34 | 2204 | 3 | 220-240 V/1 Ph /50hz |

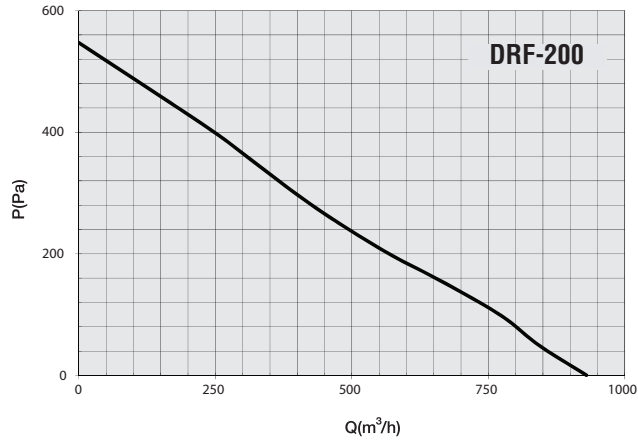


| Air Flow | | Pressure | IP/CL | Sound | Operating Temp |
|-------------------|-----|----------|-------|----------|----------------|
| m ³ /h | Pa | | | dB(A) | Min/Max (°C) |
| 560 | 380 | 44/F | 48 | -30 / 60 | |

| Rated Power | Max. Current | Nominal Speed | Capacitor | Power Supply |
|-------------|--------------|---------------|-----------|----------------------|
| W | A | RPM | uF | |
| 99 | 0.44 | 2367 | 3 | 220-240 V/1 Ph /50hz |

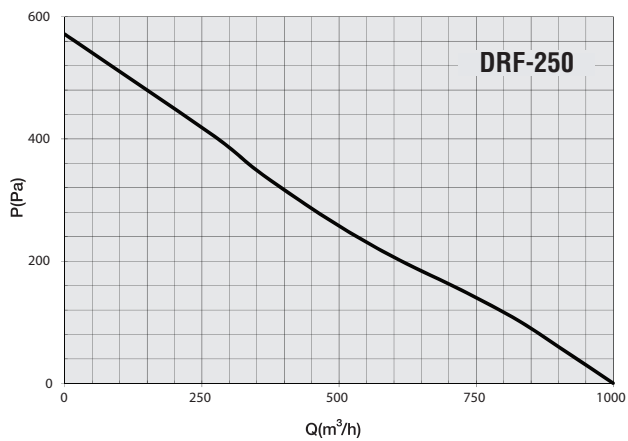
L_p: sound pressure level measured at 3m in accordance with AMCA standard 300

Tested in accordance with AMCA standard 210 at air temperature 15°C - Barometric pressure 760 mm Hg - Air specific weight 1.22 Kg/m³



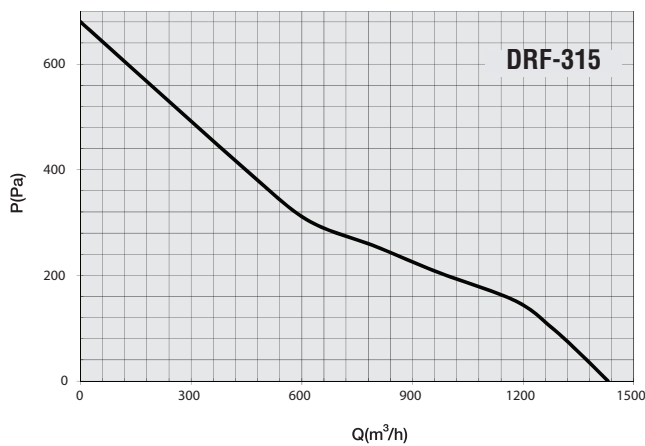
| DRF-200 | | IP/CL | Sound | Operating Temp |
|-------------------|----------|-------|-------|----------------|
| Air Flow | Pressure | 44/F | dB(A) | Min/Max (°C) |
| m ³ /h | Pa | | 52 | -30 / 60 |
| 930 | 547 | | | |

| Rated Power | Max. Current | Nominal Speed | Capacitor | Power Supply |
|-------------|--------------|---------------|-----------|----------------------|
| W | A | RPM | uF | |
| 177 | 0.80 | 2326 | 5 | 220-240 V/1 Ph /50hz |



| DRF-250 | | IP/CL | Sound | Operating Temp |
|-------------------|----------|-------|-------|----------------|
| Air Flow | Pressure | 44/F | dB(A) | Min/Max (°C) |
| m ³ /h | Pa | | 56 | -30 / 60 |
| 1000 | 571 | | | |

| Rated Power | Max. Current | Nominal Speed | Capacitor | Power Supply |
|-------------|--------------|---------------|-----------|----------------------|
| W | A | RPM | uF | |
| 176 | 0.79 | 2237 | 5 | 220-240 V/1 Ph /50hz |

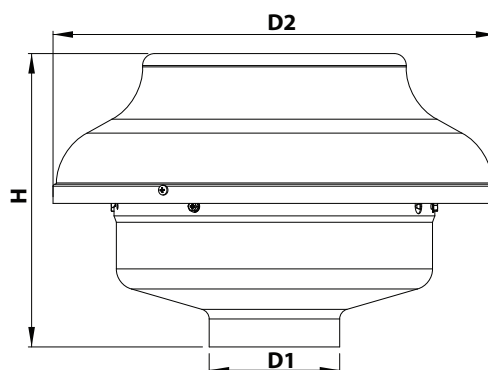
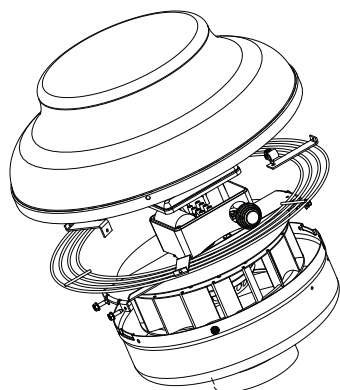


| DRF-315 | | IP/CL | Sound | Operating Temp |
|-------------------|----------|-------|-------|----------------|
| Air Flow | Pressure | 44/F | dB(A) | Min/Max (°C) |
| m ³ /h | Pa | | 56 | -30 / 60 |
| 1430 | 680 | | | |

| Rated Power | Max. Current | Nominal Speed | Capacitor | Power Supply |
|-------------|--------------|---------------|-----------|----------------------|
| W | A | RPM | uF | |
| 262 | 1.20 | 2178 | 7 | 220-240 V/1 Ph /50hz |

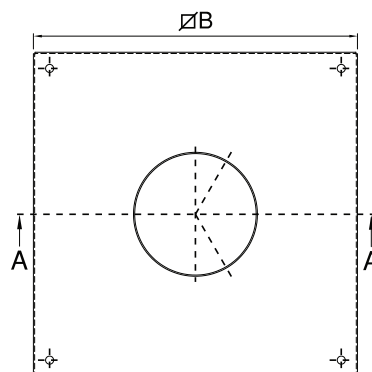
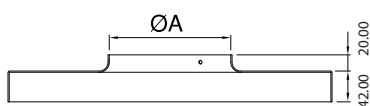


sez.
1



DIMENSIONS (mm)

| MODEL | D1 | D2 | H |
|----------------|-----|-----|-----|
| DRF 100 | 98 | 333 | 225 |
| DRF 125 | 125 | 333 | 225 |
| DRF 150 | 147 | 405 | 266 |
| DRF 200 | 198 | 405 | 266 |
| DRF 250 | 247 | 405 | 266 |
| DRF 315 | 315 | 484 | 322 |



Curb DIMENSIONS (mm)

| MODEL | ØA | B | Kg |
|----------------|-----|-----|-----|
| DRF 100 | 109 | 304 | 1.5 |
| DRF 125 | 133 | 304 | 1.5 |
| DRF 150 | 158 | 404 | 1.8 |
| DRF 200 | 209 | 404 | 1.8 |
| DRF 250 | 259 | 404 | 1.8 |
| DRF 315 | 325 | 404 | 1.8 |