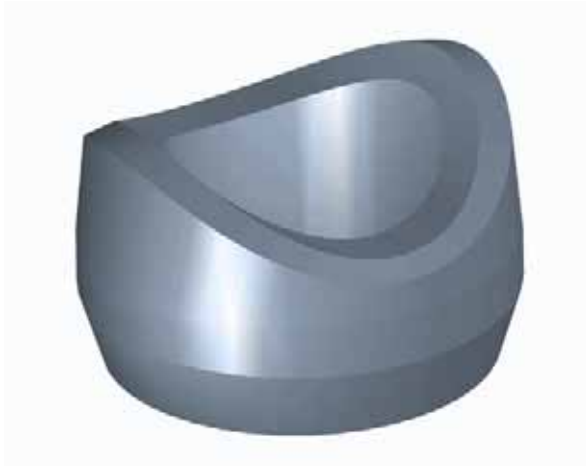


## Manifold Inlets (Sockets)

Manifold inlets are available for the construction of system manifolds.

Figure 20 - Threaded Inlet for Manifolds.



### Technical Information

Material: Carbon Steel to  
ASTM A105 / ASTM A350 LF2  
Dimensions: ANSI B16.11 / BS3799  
Pressure Rating: 3000lb

Table 7: Manifold Inlets

Part No.	Manifold Pipe Size	Container Size	Overall Diameter mm	Thread Connection	Overall Height mm	Weight kg
17036	65mm (2½")	4.5 L to 32 L	75 dia. (2.95")	1½ in. NPT	44 (1.73")	0.71 (1.57 lbs)
17037	80mm (3")	52 L to 180 L	100 dia. (3.94")	2½ in. NPT	63 (2.48")	1.20 (2.65 lbs)
17038	100mm (4")	52 L to 180 L	100 dia. (3.94")	2½ in. NPT	63 (2.48")	1.52 (3.35 lbs)
17467	150mm (6")	52 L to 180 L	100 dia. (3.94")	2½ in. NPT	63 (2.48")	1.54 (3.40 lbs)
15332	100mm (4")	343 L	122 dia. (4.80")	3 in. NPT	70 (2.76")	2.05 (4.52 lbs)
15333	150mm (6")	343 L	122 dia. (4.80")	3 in. NPT	63 (2.48")	1.53 (3.37 lbs)